

IN CASE OF FIRE OR OTHER EMERGENCY

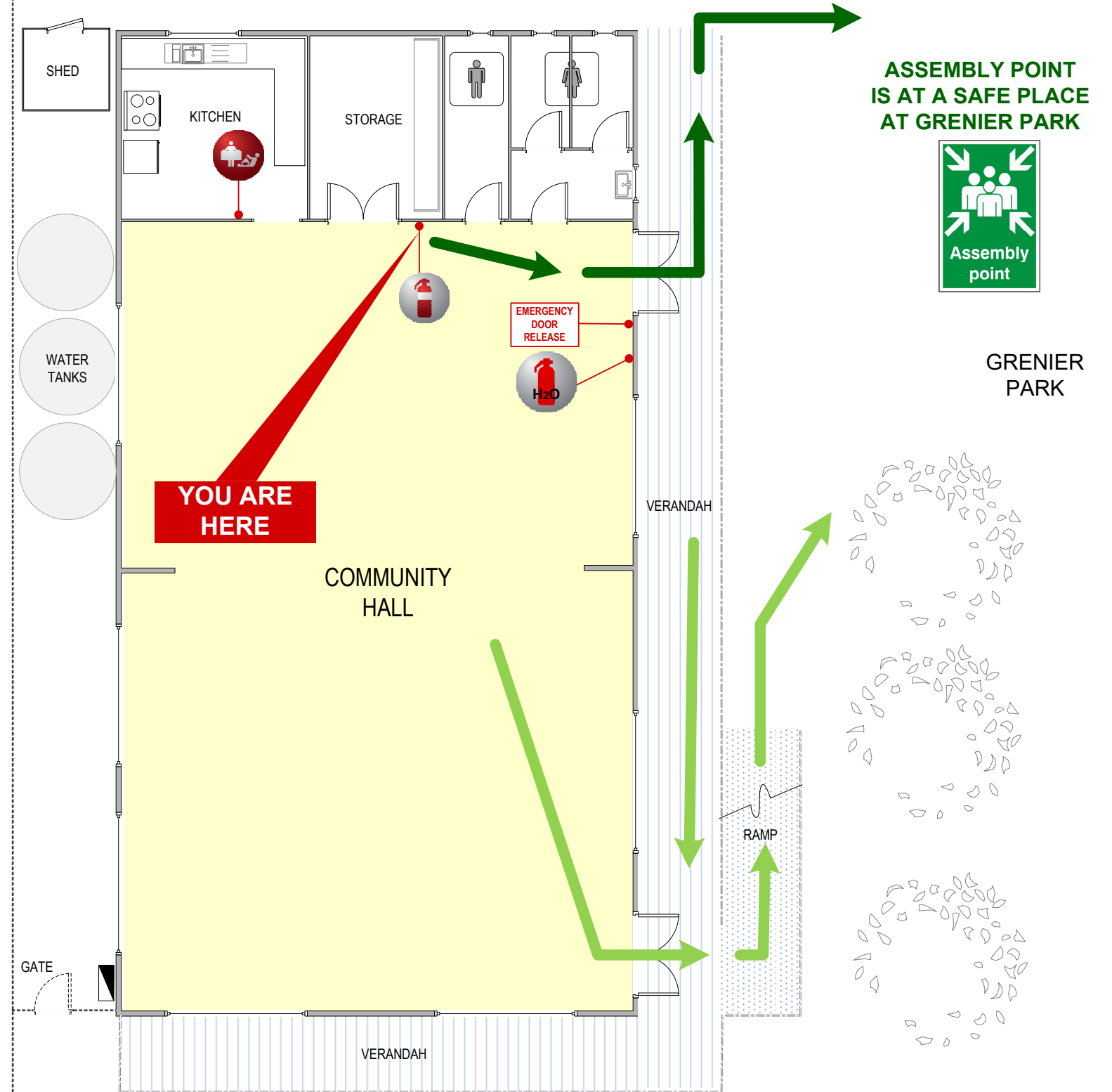
- Upon hearing a company emergency alarm sounding, or a person shouting an emergency announcement acknowledge or investigate the noise.
REMOVE any persons in immediate danger and direct them to a safe place. Should an evacuation be necessary, secure valuables and evacuate to the safety of an outside Assembly Point. Do not block Exit Paths.
- ALERT** nearby persons of any danger immediately. **PLEASE NOTE: The Fire Indicator Panel at 21 Hanify Street (main building) sounds "Local" Alarm Tones.** Occupants are reminded to dial **000 (Triple Zero)** to ensure an Emergency Services response.
- CONFINE** fire and smoke. If possible, and if not hindering the evacuation of others close (do not lock) doors and windows, only if it is safe to do so.
- EVACUATE.** Assist any person in immediate danger, if safe to do so. Follow directions from Staff Wardens and evacuate the building immediately. All occupants are to remain at the elected Assembly Point until the situation is assessed and all of occupants are accounted for. No one is to re-enter a building until advised by a Staff Warden or the attending Emergency Services personnel.

MOBILITY IMPAIRED PERSONS

- Plan ahead for emergency situations or evacuations.
- Know the exit routes in the frequented buildings, and check them for suitability, even if they are not the normal route of travel.
- Evacuate immediately upon hearing an evacuation announcement, assisted by a nominated person.



21 HANIFY STREET, ACACIA RIDGE QLD 4110



Not to Scale

DCP EXTINGUISHER		H2O (WATER) EXTINGUISHER		FIRE BLANKET		EXIT PATHWAY	
EMERGENCY EXIT SIGNAGE				SWITCHBOARD		ALTERNATE EXIT PATH(S)	